

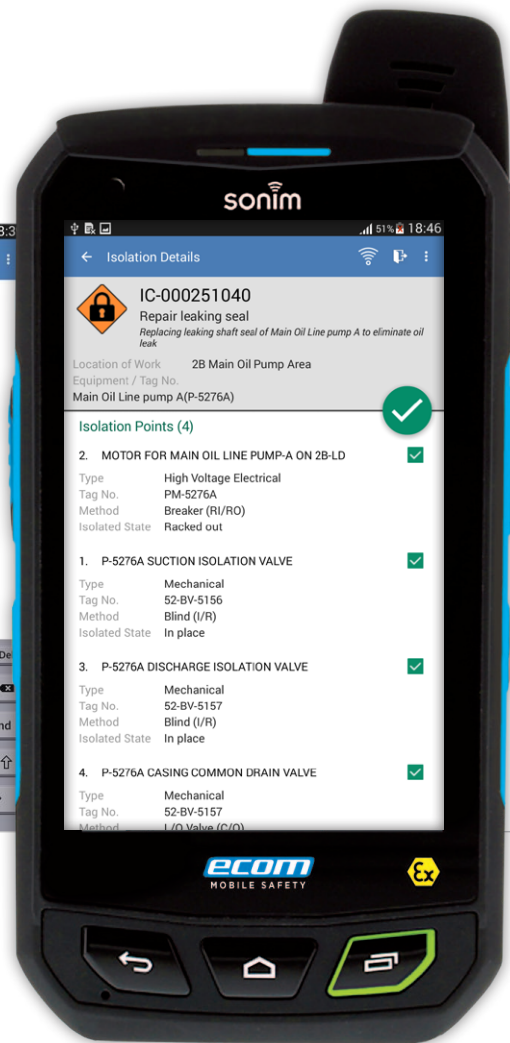
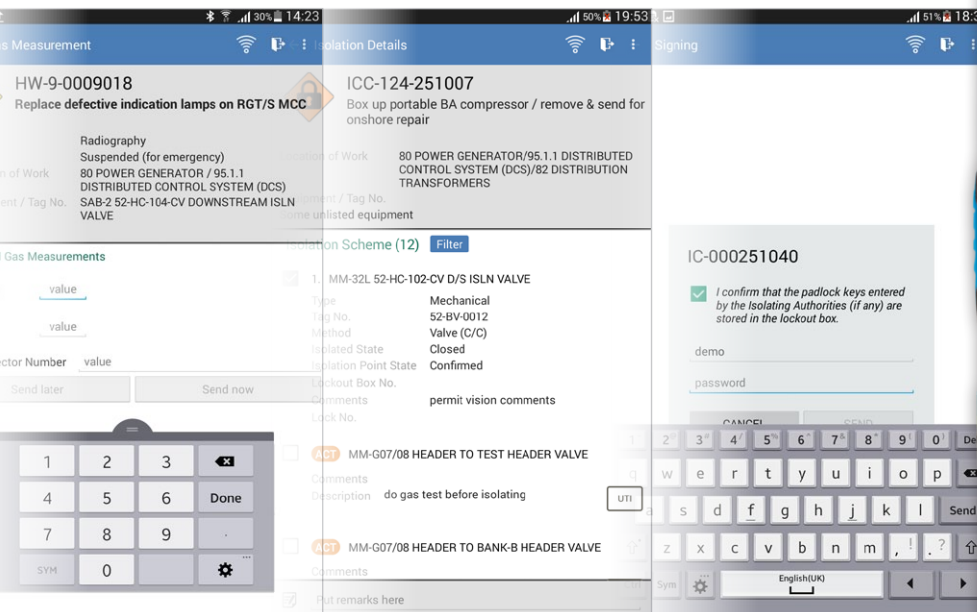


## MOBILE VISION

### CONNECTED WORKER MOBILE SOLUTION

In an ever-connected modern world, mobile devices are steadily finding their way into hazardous operations. Extending the reach of your Permit Vision system into the field using ATEX-compliant mobile devices drastically cuts travel and wait times, while enabling accurate and immediate exchange of information between operators and the control room.

eVision's Mobile Vision captures these frontline safety and efficiency improvements in fit-for-purpose mobile apps, such as bringing isolations and permits live in the field, getting more maintenance crews to work earlier in the shift. Users can easily understand, record and submit key tasks to and from Permit Vision, even if the device is offline for some time. With the proven Mobile Vision structure in place, clients will be able to easily mobilize more and more processes over time.



## EXPAND YOUR CONTROL

eVision's mobile apps take various key work processes, and put these in your pocket. Listening to industry needs means that new apps are frequently being developed, ensuring continued support for your daily maintenance.



Equipment data and state is directly available, creating a better-informed workforce



Safety and accuracy improvements through integrated RFID and barcode scanning

## PLACING ISOLATIONS

Isolating equipment before maintenance work can commence is one of the most safety-critical processes on a plant. That is why robust procedures are required to prepare, execute and assure isolations before they can be considered live. Mobile Vision helps the isolators involved understand the plan as approved in Permit Vision, and the points for which they are responsible, which they can mark as completed with the required details (such as the lock number).

## CROSS-CHECKING ISOLATIONS

Industry best practice is to have an isolation authority verify that all isolations have been placed correctly, before the isolation can be brought live. Mobile Vision enables this directly on-site, supporting scanning of RFID tags on equipment to retrieve the right isolation plan, and scanning of barcodes on isolation tags to conveniently assure that the correct points were checked. The isolation can thus be brought live from the field, getting their dependent permits issued without delay.

## MEASUREMENTS

Many permits require testing for one or more substances before they can be issued, and many more require various types of measurements to be taken periodically during the job to assure continued safety. Mobile Vision enables authorized testers to easily understand which locations require which tests, record the values measured (automatically time-stamped), and submit them into their corresponding permits in Permit Vision – all without leaving the field.

## PERMIT ISSUING

A critical piece of information typically missing from the control room's monitoring dashboards is the time at which a permit actually went live in the field. Being able to record and time-stamp that final decision to start work has both safety benefits (up-to-date understanding of jobs in progress) and efficiency benefits: field operators can deliver these decisions while staying on site, and there is now a reliable record of when contractors went to work.



Wireless data transfer eliminates the travel time between field work and the permit office, ensuring increased hands on tool time



## BUILT ON EXPERIENCE

Mobile Vision, eVision's growing best practice mobile platform, seamlessly integrates with your Permit Vision system. We paired our mobile developers, usability experts and industry veterans with leading clients and hardware partners, arriving at task-oriented solutions that make sense, and simply work. Mobile Vision is optimized for detailed yet crucial elements like ease of use, battery life, offline usage, tag scanning, security, and deployment. Seamlessly integrated with the main eVision application(s), the solution provides a crucial two-way flow of information: pertinent and up-to-date information from Permit Vision gets broadcast to all connected devices, while data and decisions recorded on each device make it back to the main application.

## PLATFORM FLEXIBILITY

Mobile Vision provides you with a robust, high performance and highly scalable architecture. Instead of simply porting eVision solutions to mobile, Mobile Vision is an extension that adds secure key functionality.

Mobile Vision is designed to easily fit into most common mobile infrastructures:

- Single native app with task-oriented modules
- Designed to easily support multiple operating systems
- Currently available on selected ATEX-compliant Android® devices
- Supports leading MDM/EMM solutions
- HTTP communication with main server application
- Support for different connectivity & security models
- Permit Vision authentication for login and signing
- Designed for limited connectivity in the field

## DEVICES

eVision works with major hardware vendors including eCom and Bartec, who are among the first companies to release ATEX Zone 1 devices for hazardous industries. This gives you assurance that Mobile Vision works correctly with supported devices, also in conjunction with the device's hardware features for RFID and barcode scanning.

